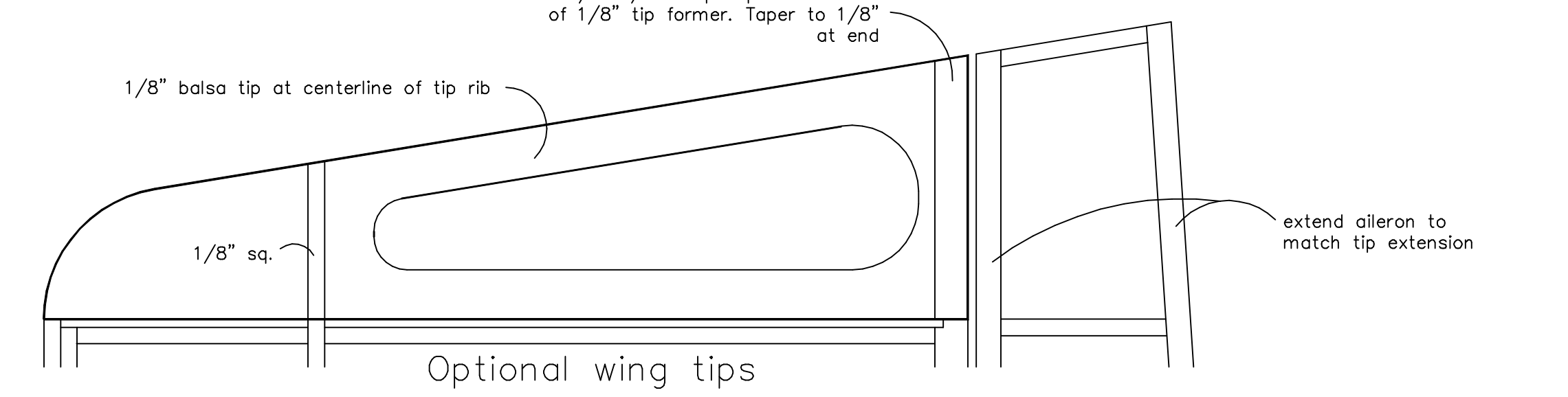
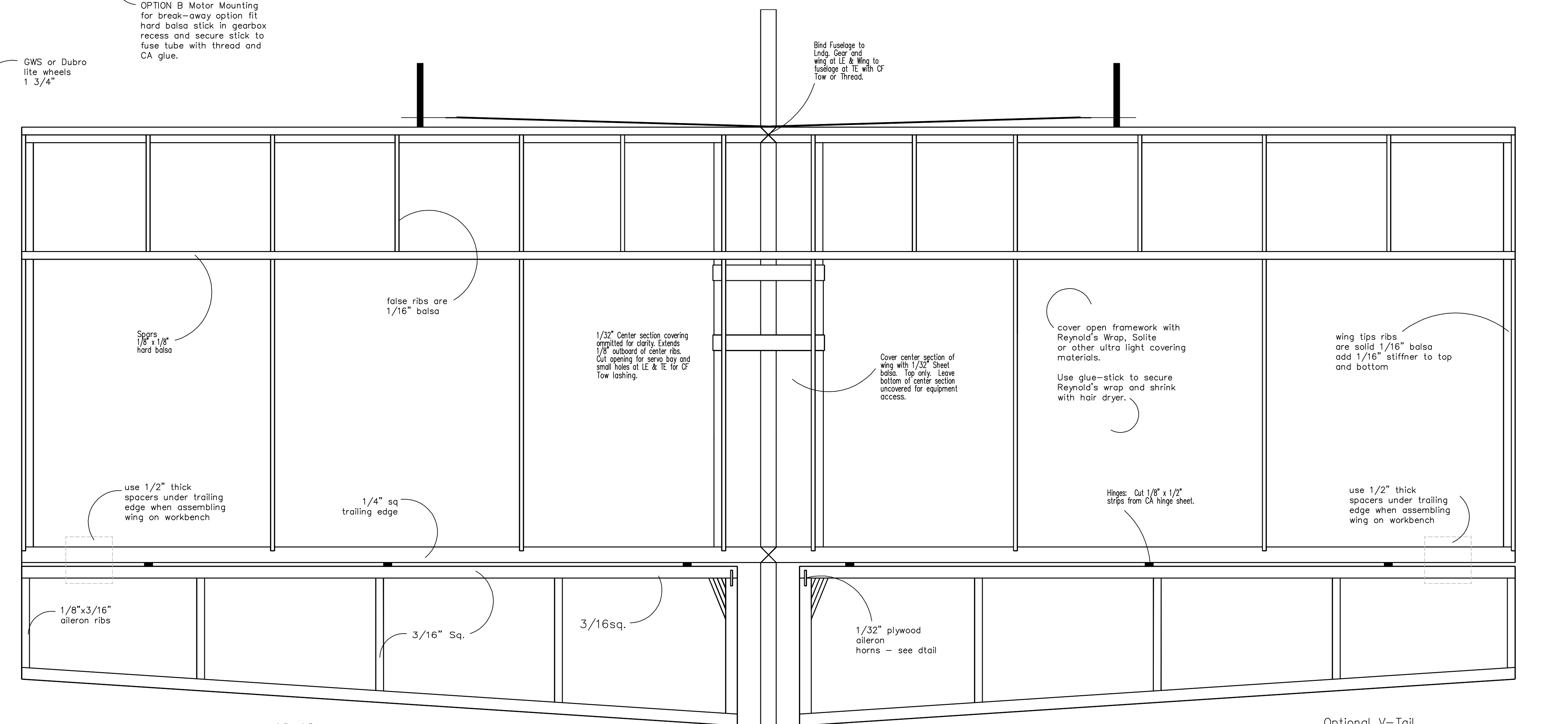
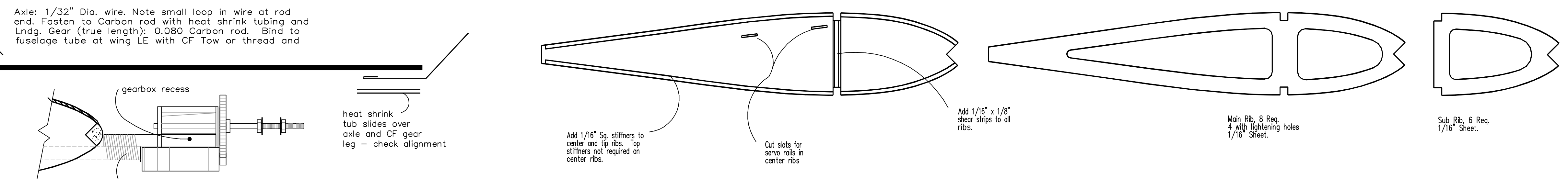
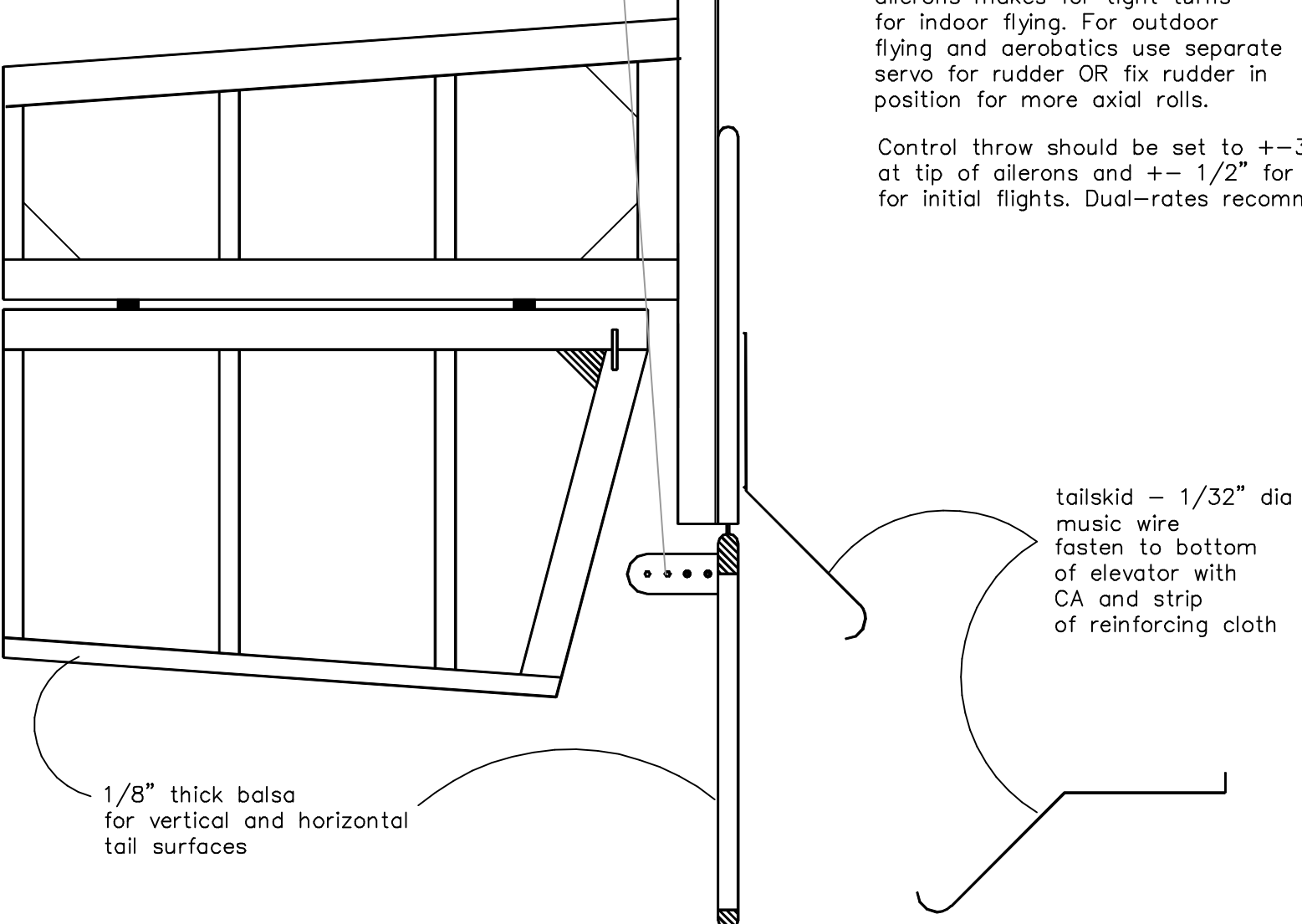
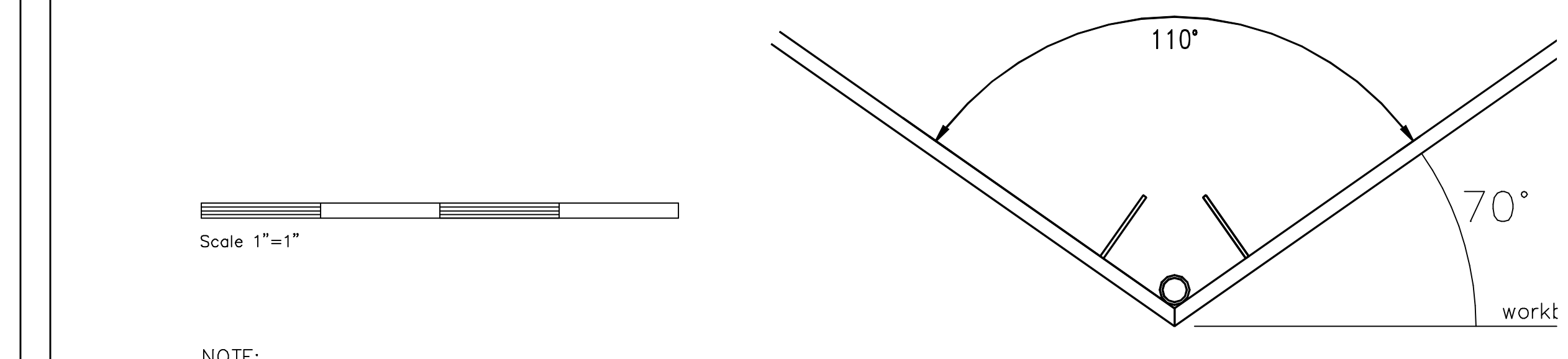


NOTE: Coupled rudder with ailerons makes for tight turns for indoor flying. For outdoor flying and aerobatics use separate servo for rudder OR fix rudder in position for more axial rolls.

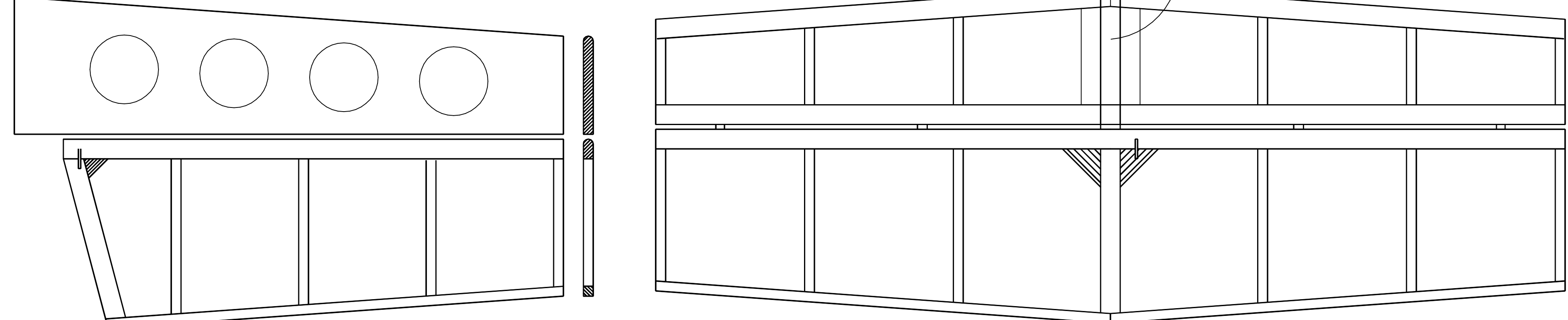
Control throw should be set to +3/4" at tip of ailerons and +/- 1/2" for elevator for initial flights. Dual-rates recommended.



Optional V-Tail V-Tail - Ruddervators are constructed of 1/8" thick balsa. Make two halves and join at 70° angle as shown



NOTE: horizontal stab mounts on bottom side of fuselage tube. vertical stab/rudder mounts on top side of tube.



Micro flight packs, motors, props and miscel micro flyer components available from www.aeromicro.com

TINY

An Indoor and Park Flyer

Original Design by Todd Long
Adapted for IPS power by T. Majewski
last revision 02/12/2003

Span	24"
lenth	21.4"
wing area	220 sq inches
weight	3.5-4.5 ounces
motor	IPS - DXA
prop	GWS 9x7 or 10x4.7
electronics	2-micro servos, micro RX, 2 amp ESC and 7 x 370 mah nimh battery pack